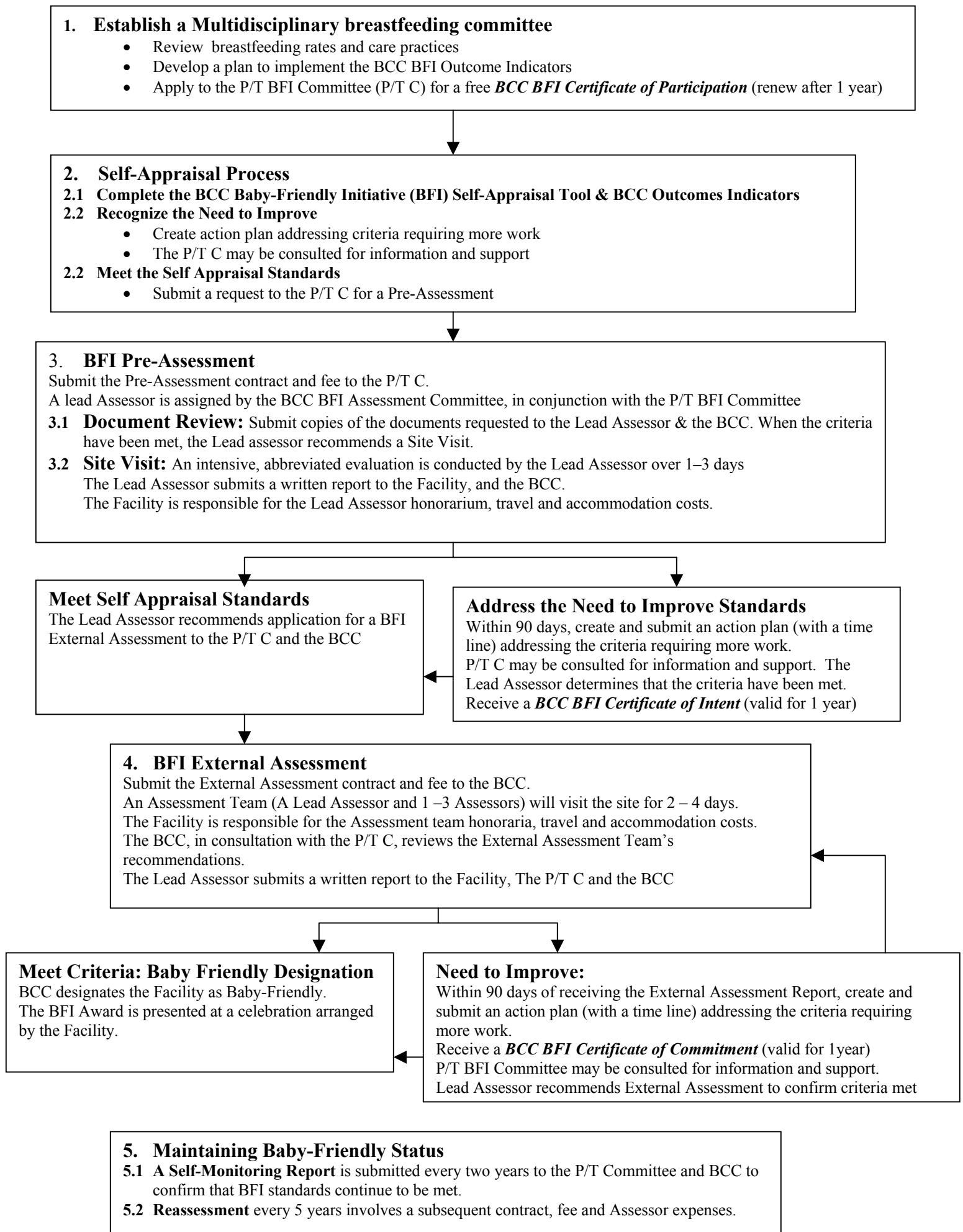




Process of achieving Baby-Friendly designation

This process applies to Hospitals, Maternity Facilities & Community Health Services.



The Breastfeeding Committee for Canada (BCC) BFI Assessment Committee will assume responsibility in a Province or Territory (P/T) where a P/T BFI Committee is not yet in place.
In the chart above, BCC refers to the BCC BFI Assessment Committee & P/T C refers to the P/T BFI Assessment Committee.